

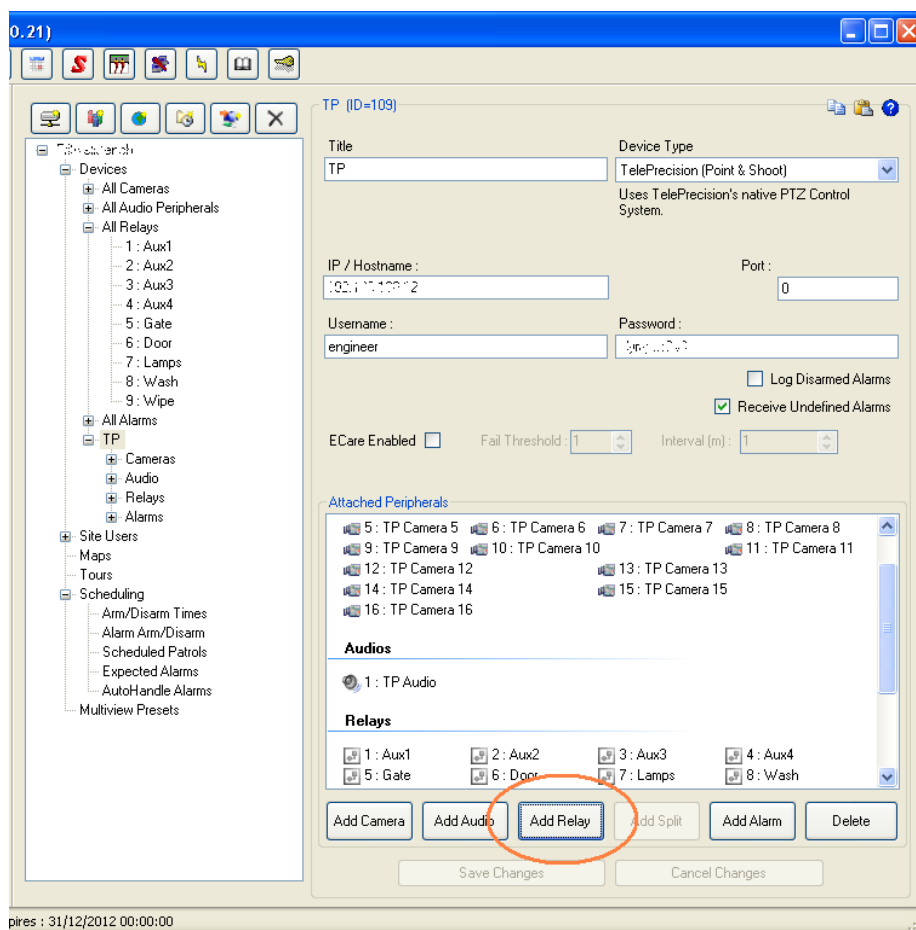


Using Immix to operate White Light

Some models in the Predator camera range manufactured by 360 Vision Technology have a 'White Light' facility which provides illumination for the camera to deliver colour images during the hours of darkness.

To allow Immix to control this feature through a Teleprecision unit, use Sureview Setup Manager to add a relay to the site configuration with an id of seven as shown below. The relay should be given a suitable name such as 'White Light' or 'Lamps'.

To operate, use the buttons found on the 'Relays' tab, next to the camera window. The lamps will illuminate for a pre-determined time and will then be switched off automatically by the camera head. If necessary, the timeout can be adjusted by the Installer via the on-screen camera head menus.



INTELLIGENT VIDEO LIMITED

REGISTERED ADDRESS
2 GAVESTON ROAD, ROYAL LEAMINGTON SPA
WARWICKSHIRE, CV32 6EU

T: 01926 523040 | F: 01926 523041 | E: SALES@INTELLIGENTVIDEO.TV

WWW.INTELLIGENTVIDEO.TV

COMPANY NUMBER 7220067 | VAT NUMBER GB987674149



INTELLIGENT VIDEO

New Relay

Output : 7 Output 2 : -1

Title : WhiteLight

Relay Type : Output

Relay behaviour
 On/Off button pair
 Default state switch

Save Changes Cancel Changes

MultiView Details Park Event Finish

Cameras Audio **Relays** Edge Devices Tours TP Camera 1

Aux1 On
Aux1 Off
Aux2
Aux3
Aux4
Gate On
Gate Off
Door
Lamps On
Lamps Off
Wash
Wipe On
Wipe Off

Presets Zoom_In Zoom_Out

INTELLIGENT VIDEO LIMITED

REGISTERED ADDRESS

2 GAVESTON ROAD, ROYAL LEAMINGTON SPA
WARWICKSHIRE, CV32 6EU

T: 01926 523040 | F: 01926 523041 | E: SALES@INTELLIGENTVIDEO.TV

WWW.INTELLIGENTVIDEO.TV

COMPANY NUMBER 7220067 | VAT NUMBER GB987674149