



Teleprecision Ltd  
3 Olympus Court  
Royal Leamington Spa  
Warwickshire UK  
CV34 6RZ

Site Point Software

Revision History

Version 1.0 12/06/2009

Site Point only manual pre-release

# SitePoint User Guide

## Overview

Teleprecision SitePoint displays live and recorded camera images on a PC connected to a Site Sentinel image transmitter by a LAN or WAN. Flexible screen layouts, views and sequences can be built up using simple drag and drop operations. Each site connection is individually password protected to ensure privacy and data security.

## Installation

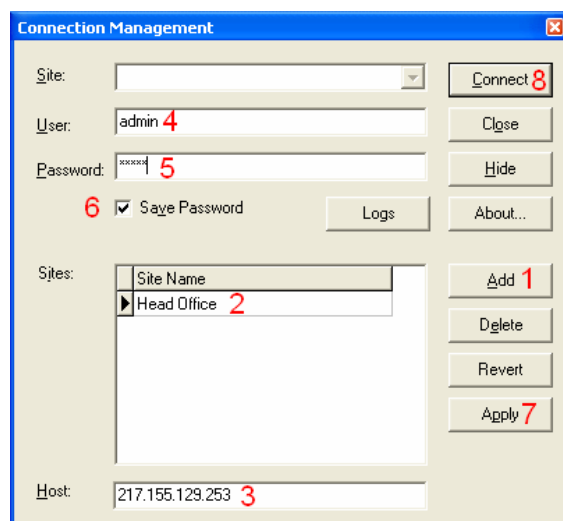
The supplied CD-Rom should Auto-run when inserted. If not, use My Computer to navigate to the CD-Rom drive and double-click the setup application. There are no options to configure during the installation phase so click [Next] at each screen until completed.

## Launching SitePoint and configuring connections

Either double-click the SitePoint icon on the desktop or use the start menu: Start->All Programs->Teleprecision->SitePoint->SitePoint  
The Connection Management screen is displayed.

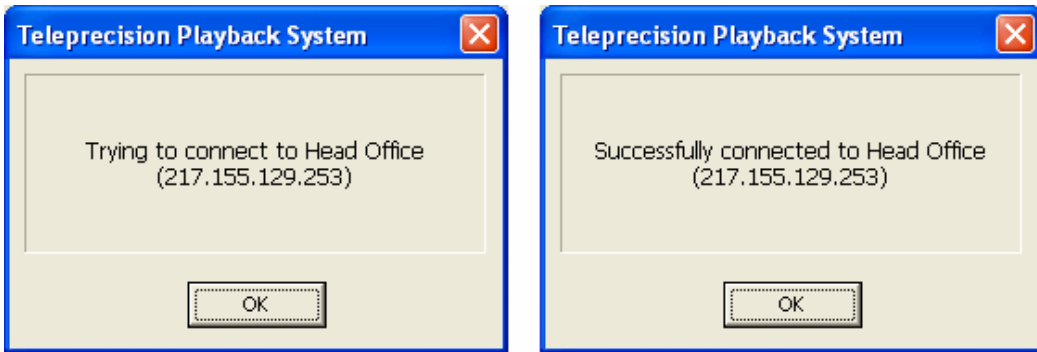
Click [Details] to expand the screen then enter the site credentials as follows:

1. Click [Add]
2. Type the name in the 'Site Name' column
3. Type the site's ip address in the 'Host' section
4. Type the user name in the 'User' section
5. Type the password in the 'Password' section
6. Tick the 'Save Password' box to remember it if required
7. Click [Apply] to save the changes
8. Click [Connect] to contact the site



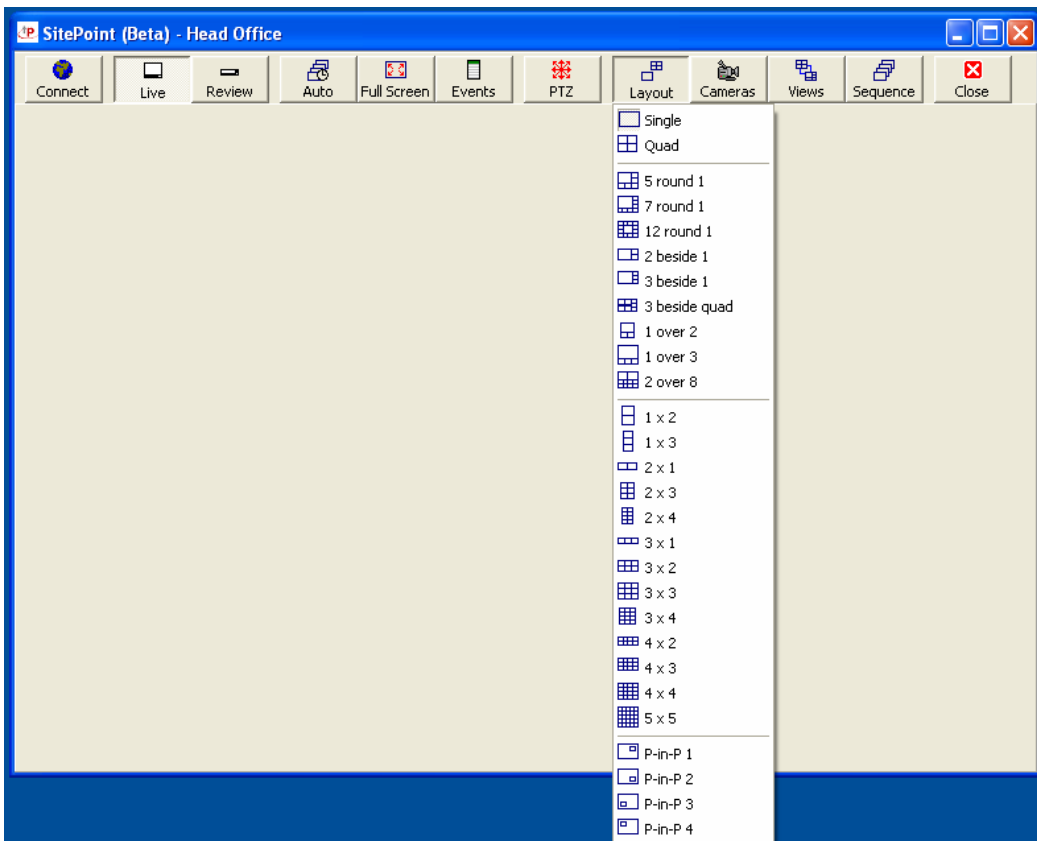
## Connecting to a site

All available sites are listed in the drop down list at the top of the Connection Management screen. Select the required site then click [Connect] to contact it. The following progress screens are displayed while the connection is made:



## Selecting a screen layout

Teleprecision SitePoint can organise the display to show many cameras simultaneously. Click [Layout] on the toolbar then select a suitable template from the drop down menu. Resize the application window to 'best fit' the selected layout if necessary.



Note that if bandwidth is limited the frame rate will reduce as the number of cameras on display increases.

### Assigning cameras to display panels

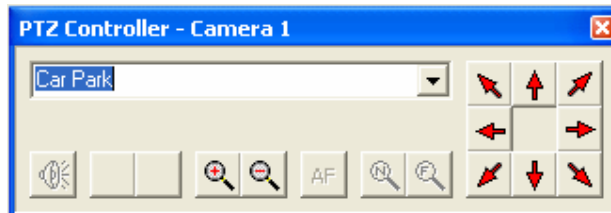
Click [Cameras] toolbar button to display the Camera Selection floating window which displays a button for each available camera.



Drag and drop the chosen camera button onto a display panel to show its images (click and hold the right mouse button over the camera button in the floating window, move the cursor over the display panel of choice, then release the mouse button) Repeat to populate the remaining panels to complete the 'View'. Click the 'X' in the top-right corner to hide the Camera Selection floating window.

### Preset, pan, tilt and zoom control

For cameras with appropriate capabilities, drag and drop the PTZ button from the toolbar (or the Camera Selection window if visible) onto a display panel to show a PTZ Controller floating window.



Use the red arrow buttons to pan and tilt the camera and the + and – buttons to alter the zoom. Preset positions can be recalled by selecting from the drop down list.

If the camera supports 'Point and Shoot' precision camera control, a single mouse click anywhere on the camera image will centre the image on that point. To zoom into a particular area, click and drag the mouse to draw a box around the target area then release the mouse button. The camera will pan, tilt and zoom to the specified area. Single-click on the image to centre if necessary. Click the 'X' in the top-right corner to hide the PTZ Controller floating window.



### Saving screen layouts and working with Views

When completed, each screen layout, camera selection and preset position can be stored as a 'View'. The system can store and recall many different Views to allow more cameras to be displayed or to show another area of a site.

To add a View, click [Views] on the toolbar to show the View Management floating window then:

1. Click [Add new view]
2. Enter a name for the view in the New view name screen
3. Click [OK], an additional button will appear in the View Management floating window
4. When the screen layout is finished click and hold down the new view button until a green square appears, then release. The View is now stored



Additional Views with different cameras, presets and screen layouts can be stored in this way. Clicking a named view button in the View Management floating window will recall the stored look.

Right-clicking a View button gives the option to store, recall, rename or delete a View. Click the 'X' in the top-right corner to hide the View Management floating window.

An example of how stored Views can be used to organise a site with say twenty four cameras would be to store six views with a quad layout showing a different bank of four cameras on each.

### Sequencing views into a site tour

A sequence can be set up to cycle through a series of views to allow a site to be surveyed as a whole.

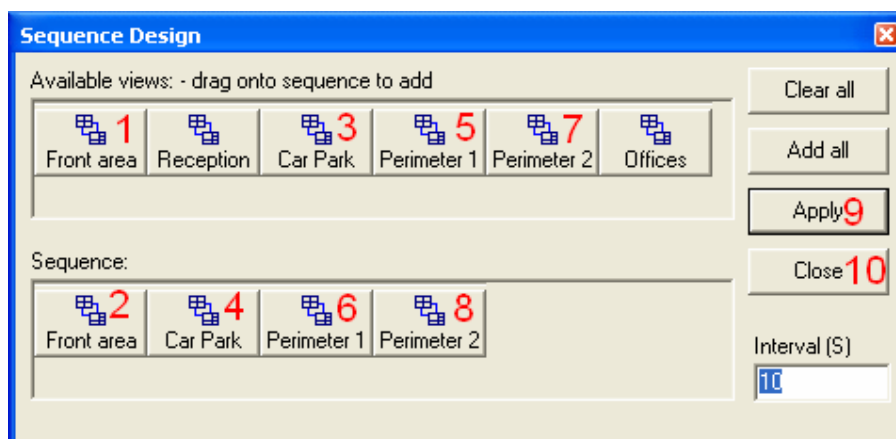
Click [Sequence] on the toolbar to launch the Sequence Management screen. All the stored Views will be shown in the top row. Drag and drop them into the bottom row to add a View to the sequence.

Drag Views to another position to rearrange the order. If a View is dropped on top of another View it is inserted into the sequence at that position. A View can appear more than once in the sequence if required.

To remove a view from the sequence just drag it out of the bottom list and drop it anywhere else on the Sequence Management screen.

The time that each view is displayed for before moving to the next view is entered in the lower right side of the screen .

Click [Apply] to store the new sequence then [Close] to return to the main screen.



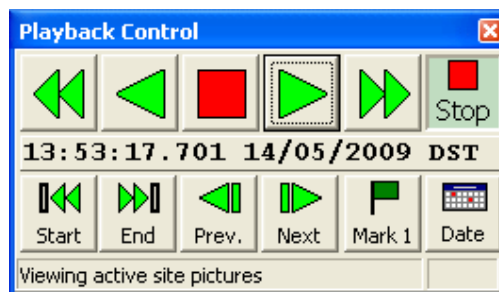
Activated the sequence by clicking the [Auto] button on the tool bar. Click it again to stop the sequence. Any interaction with a camera will turn off automatic sequencing to allow the operator to investigate any images of interest.

## Full screen mode

Click the [Full Screen] toolbar button to hide the toolbar and utilise the full extent of the screen for images. Hitting the [Esc] key will make the toolbar visible once more and then clicking [Full Screen] toolbar button again will restore the window to its original size.

## Reviewing footage

Click the [Review] button on the toolbar to show recorded images in place of live images on the screen. The Playback Control floating window is used to select the date and time of playback and speed and direction too.



The top row of buttons mimic the controls of a simple VCR. From left to right they are Fast Reverse, Reverse Play, Stop, Play and Fast Forward. The right-most section shows the current playing mode and speed.

The Fast Forward and Reverse buttons can be repeated clicked to cycle the playback through 5-times, 15-times and 60-times normal speed.

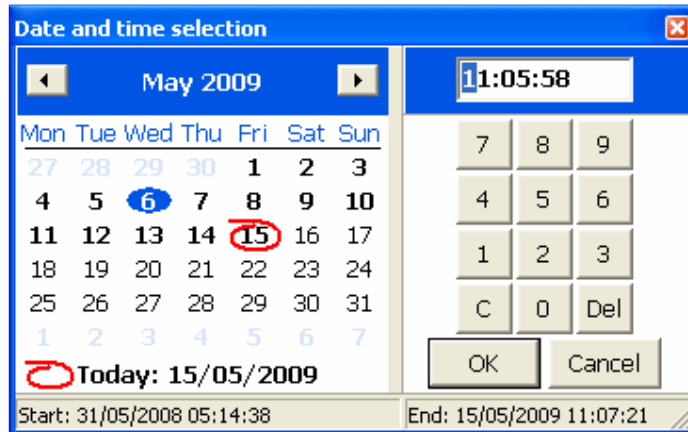
The date and time of playback footage on the screen is shown on the next row. 'DST' indicates daylight saving time was in operation on that date otherwise 'STD' is shown to indicate standard time.

Use the [Start] and [End] buttons to move to each end of the recorded footage directly.

The [Prev] and [Next] buttons step the images back or forward by a single frame.

To jump to a particular date and time click the [Date] button to display the Date Selection screen. The calendar section shows days with footage available in bold. Click the [◀] and [▶] buttons to move between months. To select the chosen date click on its number in the calendar to highlight it in blue. Type or click the numbers in the time selector to enter the chosen hour minute and second then click [OK] to jump to that point. Use the buttons in the top row to control playback speed.





## Archiving

As the DVR has a fixed capacity it is inevitable that the oldest recordings will eventually be overwritten with newer images. An archive can be made to save a precious section of footage from becoming overwritten as follows:

1. Click the [Date] button and select the starting date and time
2. Click [Mark1] to identify the start point. The button caption will change to 'Mark2'
3. Click the [Date] button and select the end date and time
4. Click [Mark2] to identify the end point. The button caption will change to 'Clear' and the date and time will be highlighted in cyan.
5. Right-click an image to show the pop-up menu, move the mouse over [Archives] then click [New Archive]
6. Enter a name for the new archive and click [OK]. The archive creation screen shows the progress as this can take some time. When complete, the footage is safely stored on the Site Sentinel unit.

To view an archive, right-click an image to show the pop-up menu, move the mouse over [Archives] then click [Open Archive]. Click on a name from the list shown then click [OK] Click [Start] to ensure the playback time is at the beginning then click [Play].

When finished reviewing an archive, right-click an image to show the pop-up menu, move the mouse over [Archives] then click [Open Archive] and select 'Active site pictures' to make all recorded footage available once more.

Footage can be transferred to a CD-Rom for backup and evidential export. This process transfers the data from the Site Sentinel unit to your PC and can be time consuming especially if connected remotely over the Internet. Due to the large amounts of data involved it is recommended that any archive containing more than a few minutes of footage be transferred over a LAN connection on the site.

An existing archive can be burned to a CD-Rom by right-clicking an image to show the pop-up menu, move the mouse over [Archives] then click [Burn archive to CD]. Select an archive name from the list and click [OK]. The transfer may take some time and once complete, the standard CD burning wizard is displayed to manage the writing process.

If an archive on the Site Sentinel unit is not required, the process can be short-cut by following steps 1 to 4 above to mark the start and end points, right-click an image to show the pop-up menu, move the mouse over [Archives], click [Burn footage to CD] then proceed as before.

The CD-Rom contains software to playback the archive in any PC or laptop. When inserted into a PC, the disc will auto-run (if enabled on the machine) and display the archived footage. The same controls are used to select playback date, time and speed as above.

### **Working with events**

A log of activations, RVRC actions and system events can be displayed by clicking the [Events] toolbar button. Drag the splitter bar found between the images and the log section to change its width.

The event log can be searched forward or back from the current playback time to load event information. Click [Options] to show a pop-up menu then click [Search ahead] or [Search back] to start as appropriate. Once the period of interest has been covered, click the [Stop Searching] button to cease.

The types of event on display can be controlled using the Filters menu. Click [Options] ->[Filters] to display it. Selecting [No filters] will show all pre-loaded events. Selecting [Clear events] will delete all entries. This can be useful when moving to a new period of interest.

Selecting any of the remaining options displays (or hides if un-ticked) a particular type of event. Any number of these options can be selected at the same time to allow a flexible summary to be built up.

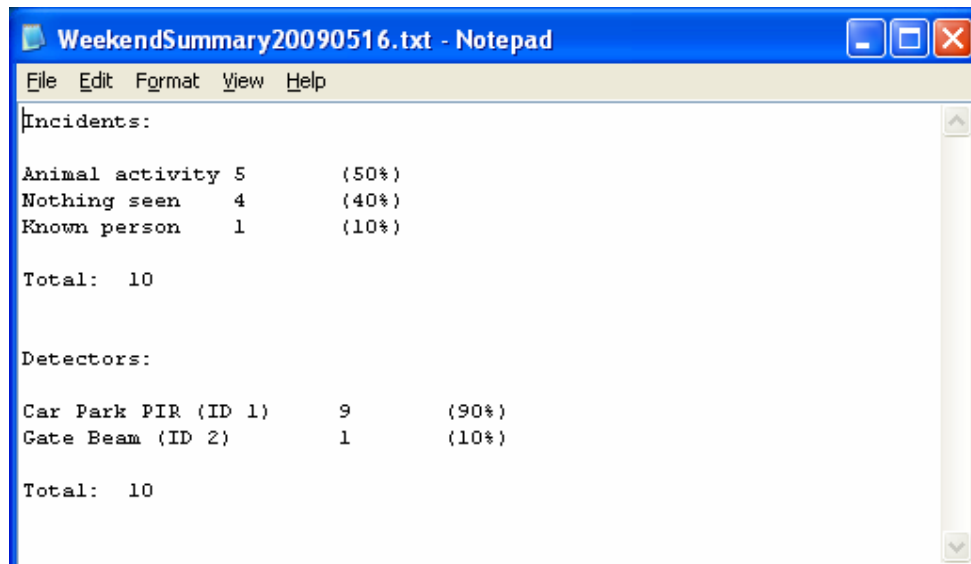
### **Generating reports**

The contents of the events section can be exported to a plain text or comma-separated values file (.txt or .csv). Any active filters in the log section will also be applied to the exported text.

To export the events click [Options]->[Reports]->[Filtered events] then choose the format (.txt or .csv) and enter a filename.

A summary report of detector activations and incident closure remarks can be generated based on the information loaded in the event section.

Click [Options]->[Reports]->[Activation summary] then enter a name for the text file to save the report. A sample report is shown below:



The image shows a Notepad window titled "WeekendSummary20090516.txt - Notepad". The window contains a text report with the following content:

```
Incidents:

Animal activity 5      (50%)
Nothing seen    4      (40%)
Known person   1      (10%)

Total: 10

Detectors:

Car Park PIR (ID 1)  9      (90%)
Gate Beam (ID 2)    1      (10%)

Total: 10
```