



## Technical Note: Wireless detectors

Wireless detectors are added to a system equipped with a Luminite Masthead device in three stages. First, store a new preset using ArcLite, then, add the detector to the Remote Admin Tool's alarm section, and finally, associate it with the camera and preset covering the area of interest.

1. To add an additional preset to a PTZ camera:

- Connect to the site using ArcLite and open the camera feed.
- Click 'Preset Programmer' found immediately below the cameras in the camera list, a floating window will appear. Enter the camera number in this window and click [Connect]
- Enter a name for this preset e.g. 'Wireless1' and click [Add Preset]. Remember the new preset's number for step three later
- Move the camera to the area of interest and click [Store Preset]

2. To add the detector to the system:

- Open the Remote Administration Tool and select 'Manufacturer' from the view menu then connect to the unit.
- Click 'Alarm Channels' in the left pane then use the drop down channel selector on the right to see if the wireless detector is already listed. If it is, move to step three.
- Overtyping the new alarm name in the drop down selector and click [Add]. Enter the detector name, alarm channel number and zone information. Alarm channel numbers MUST run consecutively, so if there were eight detectors before, this will be number nine. See fig 1
  - Enter the source trigger group – this is usually '2' but check the Luminite screen to make sure – see fig 2. Enter the source trigger id – enter the number that the wireless detector is set to internally here. Set detection mode to 'Internal'. Click [Apply]

3. To link the detector to a camera preset:

- Click the camera details tab and enter the camera number and preset number remembered from step 1 as shown in fig 3.
- Click [Apply]

Technical Support Team

### INTELLIGENT VIDEO LIMITED

REGISTERED ADDRESS

HAWKSTONE HOUSE, PORTLAND MEWS,  
PORTLAND STREET, LEAMINGTON SPA, CV32 5HD

T: 01926 523040 | F: 01926 523041 | E: SALES@INTELLIGENTVIDEO.TV

[WWW.INTELLIGENTVIDEO.TV](http://WWW.INTELLIGENTVIDEO.TV)

COMPANY NUMBER 7220067 | VAT NUMBER GB987674149



# INTELLIGENT VIDEO

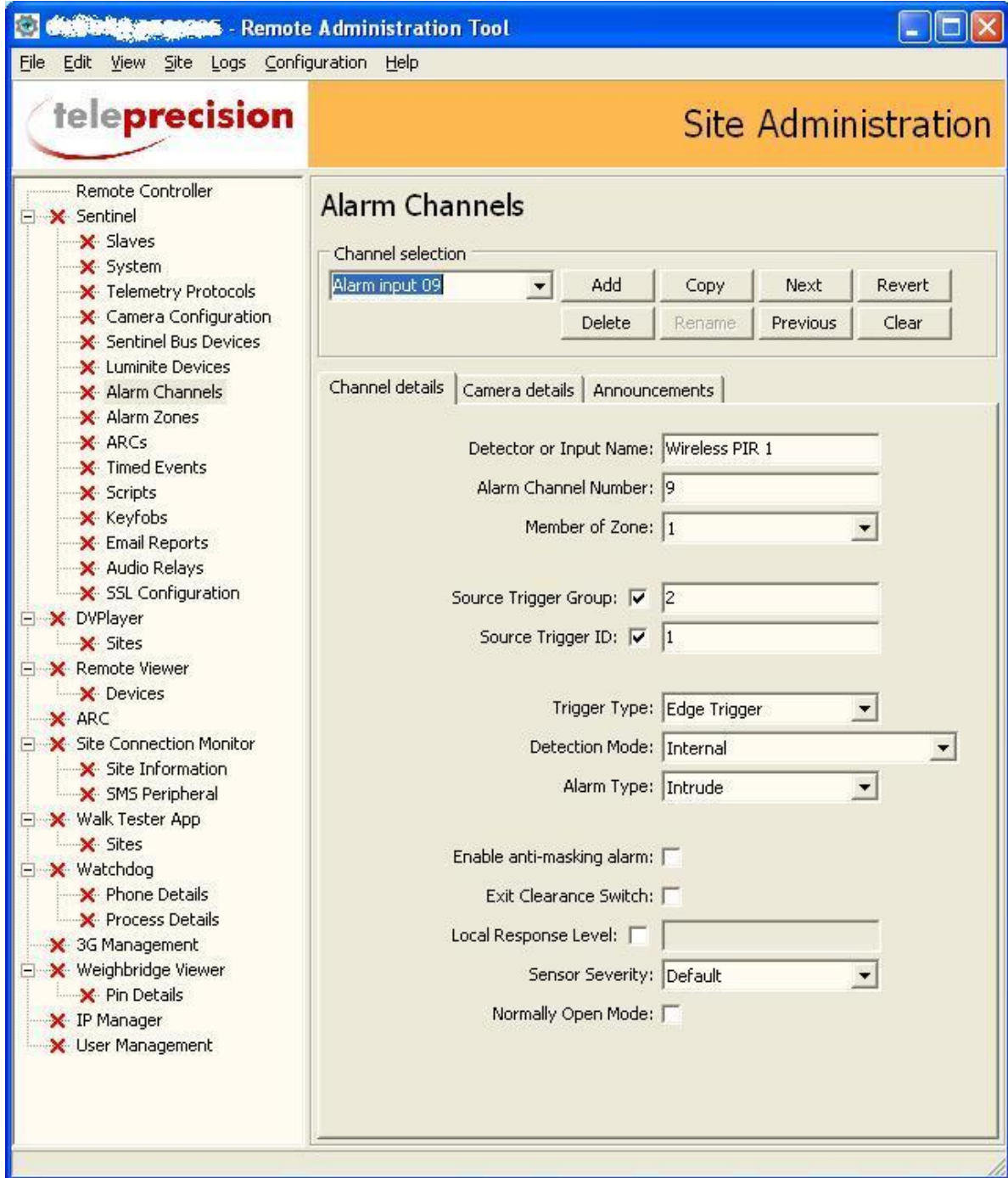


Fig.1

## INTELLIGENT VIDEO LIMITED

REGISTERED ADDRESS

HAWKSTONE HOUSE, PORTLAND MEWS,  
PORTLAND STREET, LEAMINGTON SPA, CV32 5HD

T: 01926 523040 | F: 01926 523041 | E: SALES@INTELLIGENTVIDEO.TV

[WWW.INTELLIGENTVIDEO.TV](http://WWW.INTELLIGENTVIDEO.TV)

COMPANY NUMBER 7220067 | VAT NUMBER GB987674149



# INTELLIGENT VIDEO

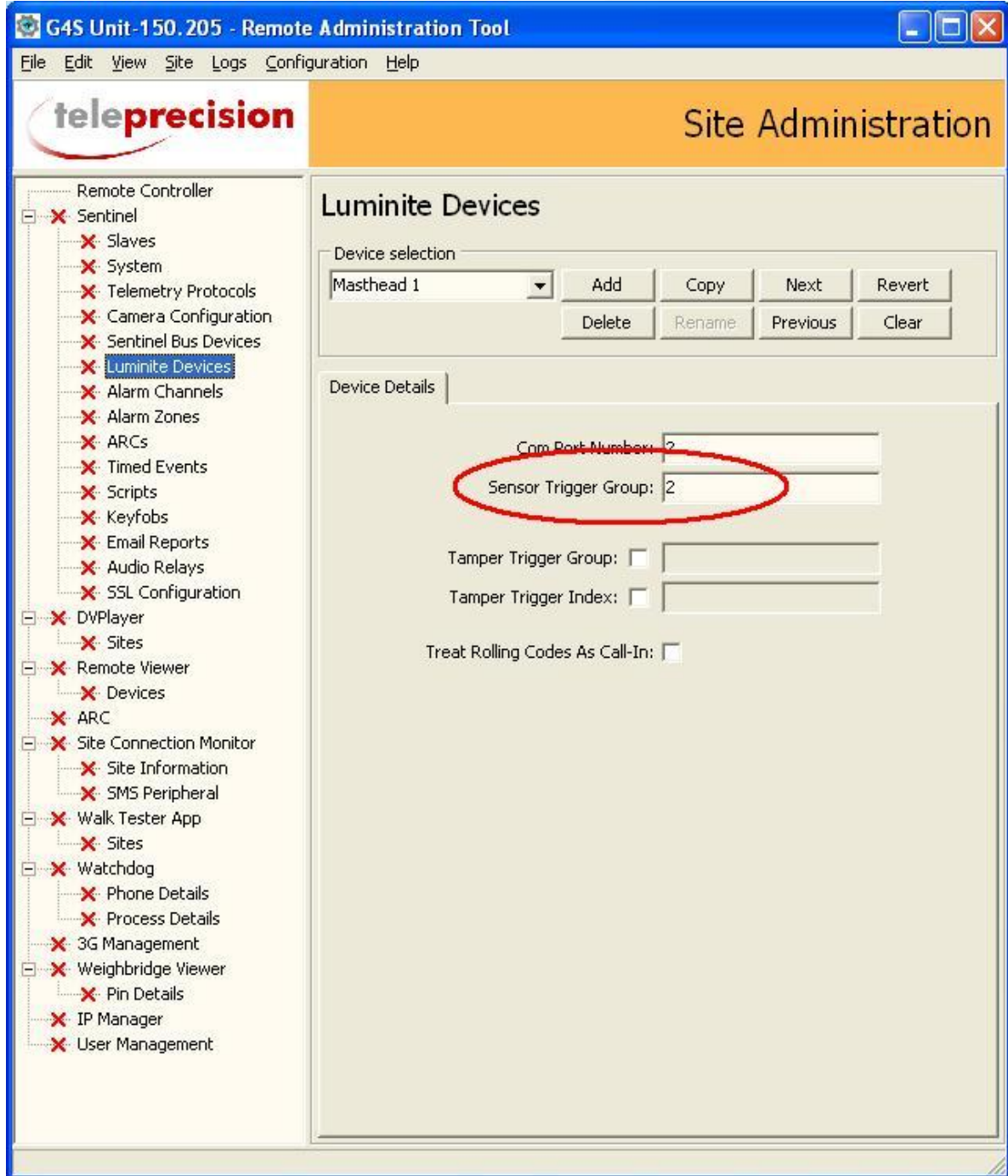


Fig.2

## INTELLIGENT VIDEO LIMITED

REGISTERED ADDRESS

HAWKSTONE HOUSE, PORTLAND MEWS,  
PORTLAND STREET, LEAMINGTON SPA, CV32 5HD

T: 01926 523040 | F: 01926 523041 | E: SALES@INTELLIGENTVIDEO.TV

[WWW.INTELLIGENTVIDEO.TV](http://WWW.INTELLIGENTVIDEO.TV)

COMPANY NUMBER 7220067 | VAT NUMBER GB987674149



# INTELLIGENT VIDEO

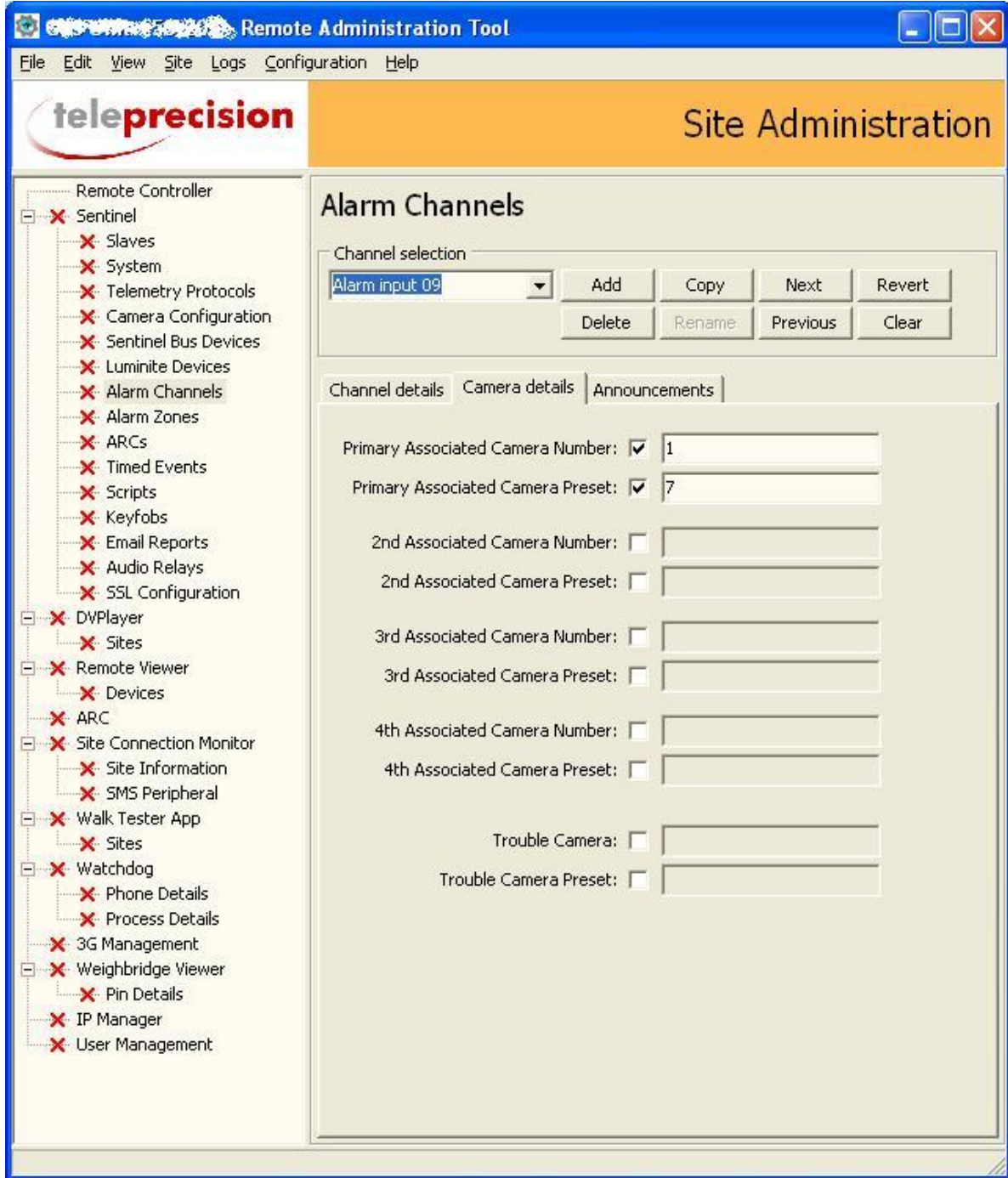


Fig.3

## INTELLIGENT VIDEO LIMITED

REGISTERED ADDRESS

HAWKSTONE HOUSE, PORTLAND MEWS,  
PORTLAND STREET, LEAMINGTON SPA, CV32 5HD

T: 01926 523040 | F: 01926 523041 | E: SALES@INTELLIGENTVIDEO.TV

[WWW.INTELLIGENTVIDEO.TV](http://WWW.INTELLIGENTVIDEO.TV)

COMPANY NUMBER 7220067 | VAT NUMBER GB987674149